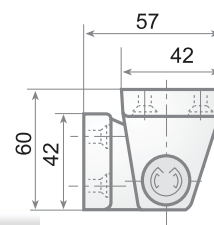
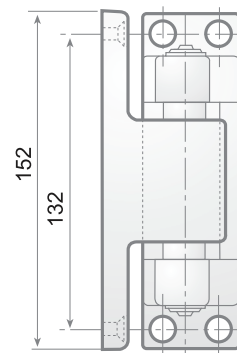
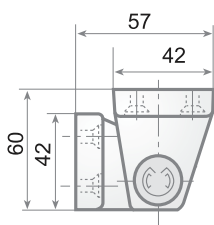
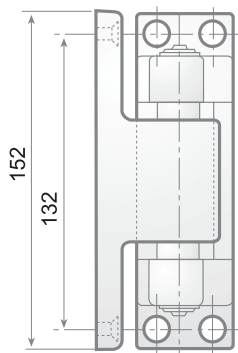


# BISAGRA **207-208** HINGE



Fabricada en Zamak 5.  
Casquillos en poliamida 6.6 natural  
Intercambiable derecha e izquierda  
Peso máximo de puerta: 40 kg.  
8 Tornillos de Ø6 mm.

Zamak 5 hinge  
Natural polyamide 6.6 bushings.  
Interchangeable for left and right hand doors  
Maximum door weight: 40 Kgs.  
8 Screws of Ø6 mm.

Suplemento: Poliéstireno antichoque altura 6 mm.

Shim: Antishock polystyrene 6 mm. height

## **207** Sin Rampa Without ramp



Modelo Version	Código Code	Acabado Finished	Peso <sup>(gr.)</sup> Weight
<b>207</b>	FI0 0029	Cromo brillo Bright chrome	605
<b>207 P</b>	FI0 0030	Epoxi gris Epoxi grey	400

## **208** Con Rampa With ramp

Modelo Version	Código Code	Modelo Version	Código Code	Acabado Finished	Peso <sup>(gr.)</sup> Weight
Izquierda Left	Left	Derecha Right	Right		
<b>208-I</b>	FI0 3590	<b>208-D</b>	FI0 0031	Cromo brillo Bright chrome	620
<b>208 P-I</b>	FI0 3591	<b>208 P-D</b>	FI0 0032	Epoxi gris Epoxi grey	415